

Name: \_\_\_\_\_

## Metric Measurement Worksheet

Scientists use the metric system to measure the size of critters.

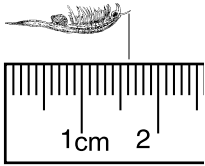
A millimeter (mm) is about the width of a straight pin.

A centimeter (cm) is slightly smaller than a dime.

10 millimeters = 1 centimeter

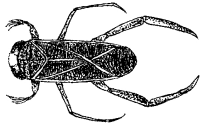
Use the metric ruler to measure the following animals and plants, shown at their actual size.

**Example**



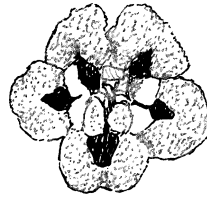
**Fairy Shrimp**

16 mm 1.6 cm



**Water Boatman**

\_\_\_\_\_ mm \_\_\_\_\_ cm

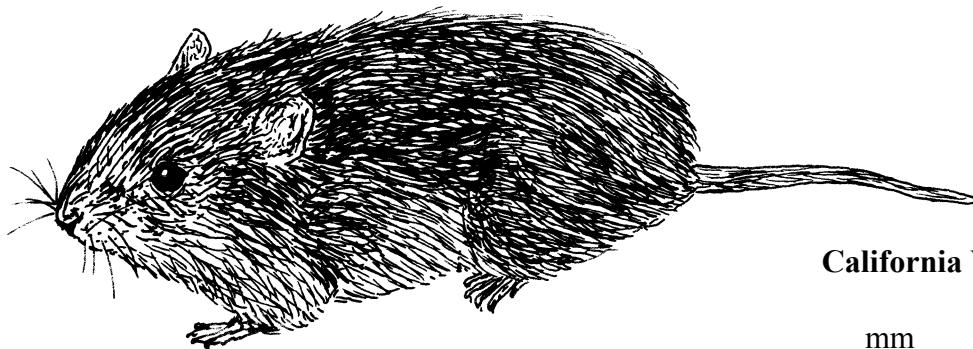


**Vernal Pool Monkeyflower**

\_\_\_\_\_ mm \_\_\_\_\_ cm

**Fremont's Tidy-tips**

\_\_\_\_\_ mm \_\_\_\_\_ cm



**California Vole**

\_\_\_\_\_ mm \_\_\_\_\_ cm

When you measure the water boatman, should you measure to the tip of its legs? Explain your answer.